



GMT MONTHLY MEMBERSHIP PROGRESS REPORT

Results as of: 3/31/2019

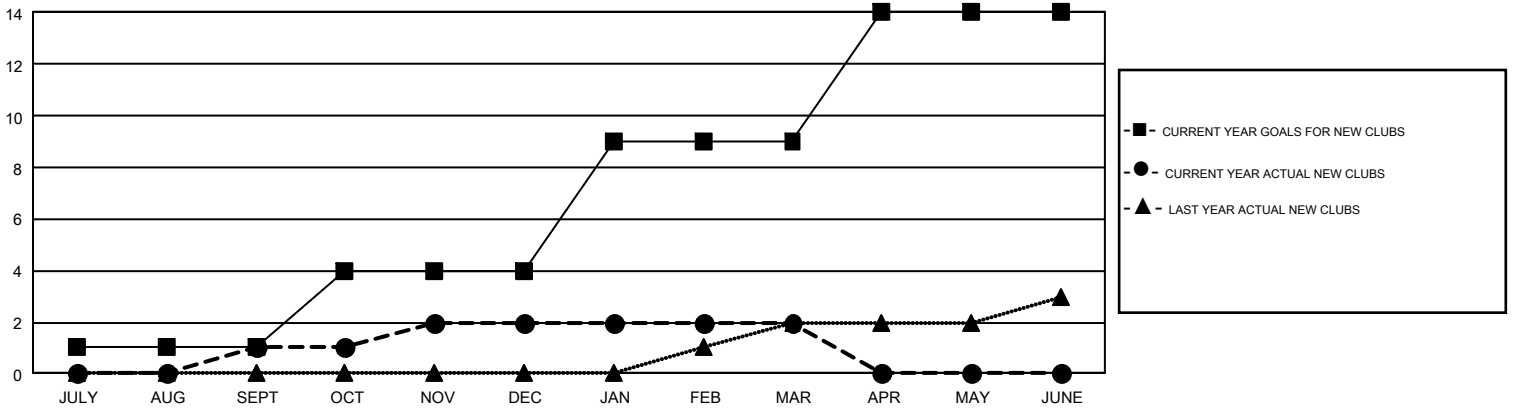
GMT Constitutional Area 2, Group A

GMT: GORDON ZIEGLER

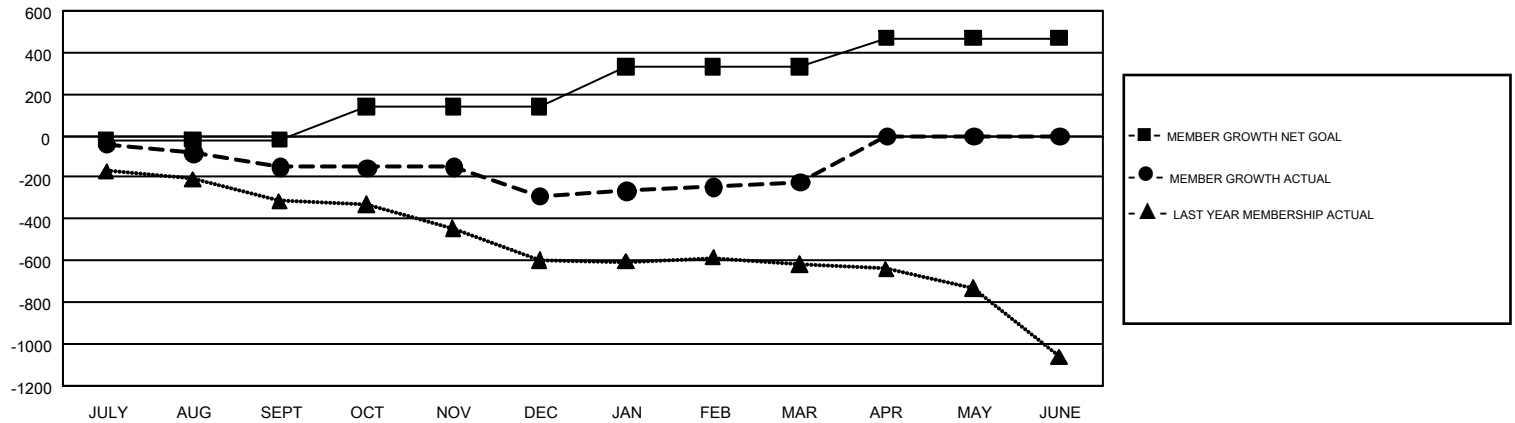
REPORT DOES NOT INCLUDE CLUBS IN UNDISTRICTED AREAS.

Clubs				Members			
RESULTS FOR 2018-2019				RESULTS FOR 2018-2019			
QUARTER	NEW CLUB GOAL	NEW CLUBS	DROPPED CLUBS	QUARTER	MEMBER GROWTH NET GOAL	MEMBER GROWTH ACTUAL	DROPPED MEMBERS ACTUAL (including transfers)
JULY/AUG/SEPT	1	1	1	JULY/AUG/SEPT	-20	271	361
OCT/NOV/DEC	3	1	4	OCT/NOV/DEC	158	399	509
JAN/FEB/MAR	5	0	0	JAN/FEB/MAR	192	368	270
APR/MAY/JUNE	5	0	0	APR/MAY/JUNE	139	0	0

GOALS AND ACTUAL NEW CLUBS CUMULATIVE



GOALS AND ACTUAL MEMBERS CUMULATIVE



DROPPED CLUBS: 5	340 CLUBS OF 679 ADDED 1 OR MORE NEW MEMBERS	<u>GENDER DISTRIBUTION</u>	
<u>DROPPED MEMBERS</u>		MALE	10,608 (67.02%)
DECEASED	167	FEMALE	5,220 (32.98%)
CLUB CANCELLED	7	TOTAL FAMILY UNIT MEMBERS	
OTHER	966	3,032	
TOTAL	1,140	FAMILY MEMBERS PAYING HALF DUES	
		1,538	

[CLICK HERE FOR CUMULATIVE MEMBERSHIP DATA](#)